

FC CONNECTOR - PM (POLARIZATION MAINTAINING), DOME



Part Number: PM-CON1005-XXXX-XX-XXX-XX

PRODUCT DESCRIPTION

Precision Fiber Products manufactures FC multimode connectors. They come in a variety of ID bore sizes and performance types.

Suggested crimp tool for assembly:

PFP Fiber Optic Crimp Tool

Part Number: **PFP-CT1000**

Available in Standard, Premium and Spectacular®

FEATURES

- Pre-assembled.
- Pre-radiused, pre-polished ferrule.
- Accommodates 0.9mm, 2mm and 3mm fiber types.
- Available with 0.9mm, 2mm and 3mm boots.
- Complies with IEC, TIA and telcordia standards.
- Suitable for high-speed production polishing processes.
- Conforms to JIS C5973 standard (F04 type Connector).



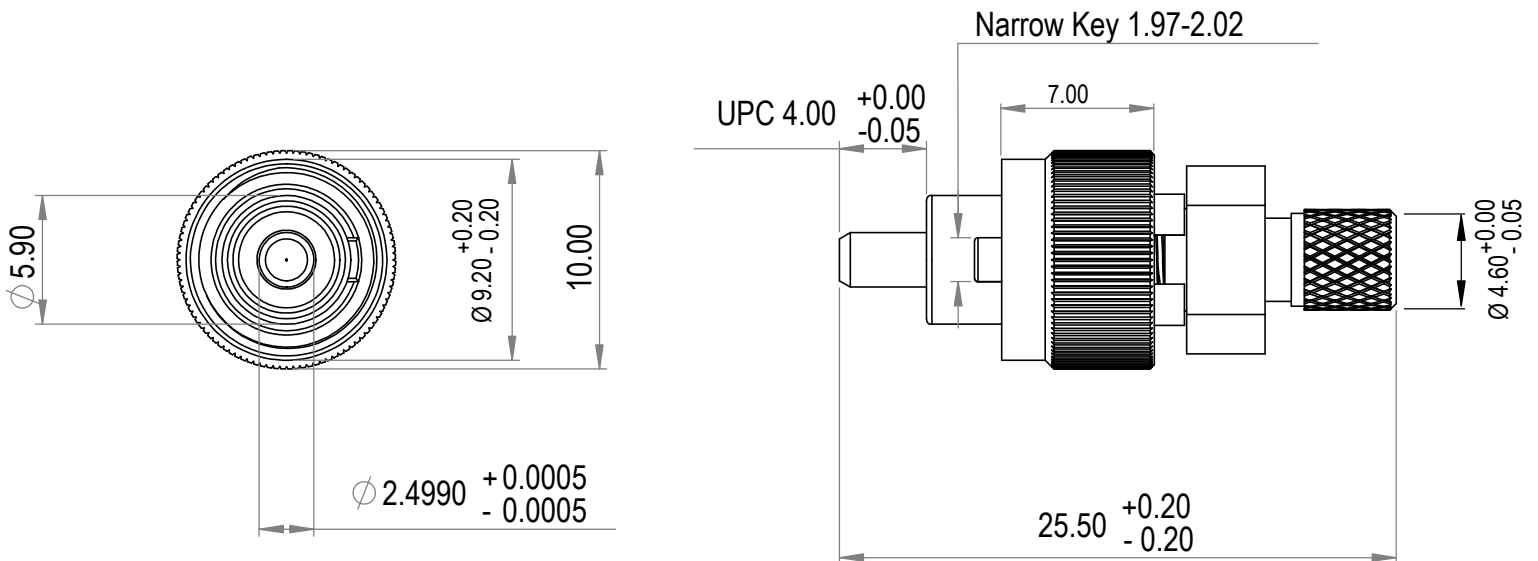
SPECIFICATIONS

| | |
|------------------------------|--------------------------|
| Family | Connector |
| Type | FC |
| End Face Dome | 10-25mm Spherical Radius |
| Operating Temperature | -25° - + 70° C |

| BOOT COLOR | XXX |
|-------------------|------------|
| Black | BLK |
| Blue | BLU |
| Green | GRN |
| Red | RED |
| White | WHT |
| Beige | BGE |
| Gray | GRY |
| Yellow | YLW |

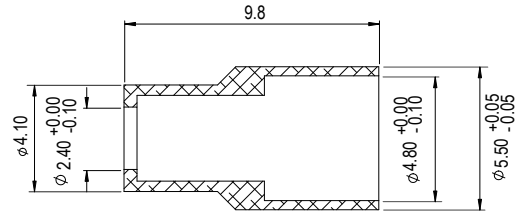
| Part | Material | Size |
|----------------|-----------------------------------|-----------------|
| Ferrule | Ceramic Zirconia ZrO ₂ | - |
| Body | Nickel Plate Brass | - |
| Boot | PVC | 0.9mm, 2mm, 3mm |
| Crimp | Aluminum | 2mm, 3mm |

DRAWING SPECIFICATIONS

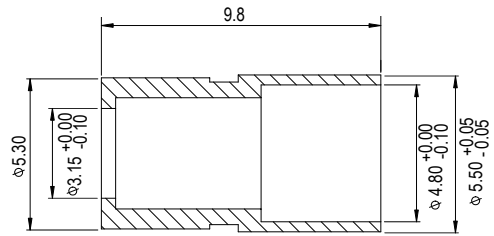




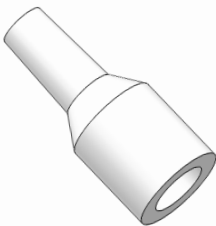
PN: CRP-2SC
Crimp Hex Size: (0.197, 0.131)



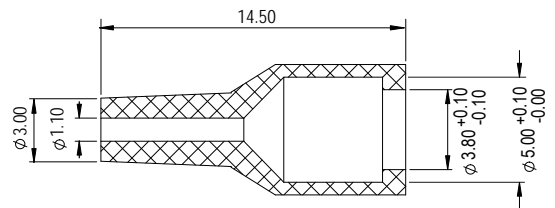
PN: CRP-3SC
Crimp Hex Size: (0.197, 0.171)

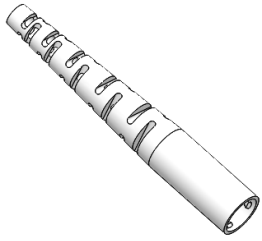


PFP Fiber Optic Crimp Tool
PN: PFP-CT1000

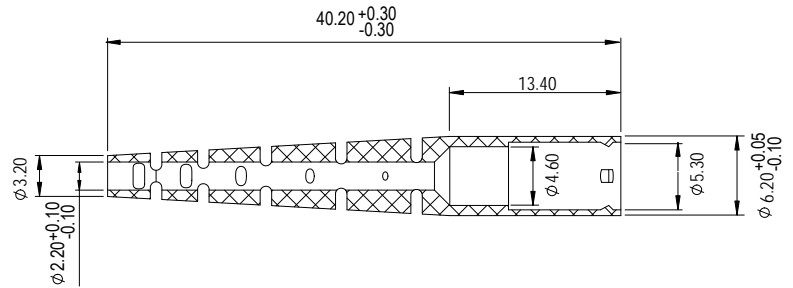


PN: BOT-SC-9FC-S-XXX

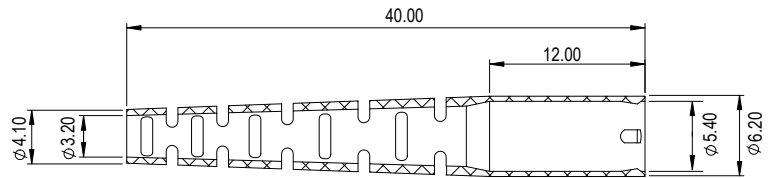




PN: BOT-SCFCST-2SC00-XXX



PN: BOT-SCFCST-3SC00-XXX



| -XXXX | I.D | Standard | | | Premium | | | Spectacular® | | | Double Spectacular® | | |
|-------|--------|----------|--------|---------------|---------|--------|---------------|--------------|--------|---------------|---------------------|--------|---------------|
| | | Min | Max | Concentricity | Min | Max | Concentricity | Min | Max | Concentricity | Min | Max | Concentricity |
| 0800 | 0.0800 | 0.0810 | 0.0830 | <1 | 0.0810 | 0.0830 | <0.5 | 0.0810 | 0.0820 | <0.5 | 0.0810 | 0.0820 | <0.25um |
| 1250 | 0.1250 | 0.1250 | 0.1260 | <1 | 0.1250 | 0.1260 | <0.5 | 0.1250 | 0.1255 | <0.5 | 0.1250 | 0.1255 | <0.25um |
| 1255 | 0.1255 | 0.1255 | 0.1265 | <1 | 0.1255 | 0.1265 | <0.5 | 0.1255 | 0.1260 | <0.5 | 0.1255 | 0.1260 | <0.25um |
| 1260 | 0.1260 | 0.1260 | 0.1270 | <1 | 0.1260 | 0.1270 | <0.5 | 0.1260 | 0.1265 | <0.5 | 0.1260 | 0.1265 | <0.25um |
| 1270 | 0.1270 | 0.1270 | 0.1280 | <1 | 0.1270 | 0.1280 | <0.5 | 0.1270 | 0.1275 | <0.5 | 0.1270 | 0.1275 | <0.25um |
| 1280 | 0.1280 | 0.1280 | 0.1290 | <1 | 0.1280 | 0.1290 | <0.5 | 0.1280 | 0.1285 | <0.5 | - | - | - |



ORDERING INFORMATION

PM-CON1005-XXXX

XX

XXX

XX

| Ferrule ID Bore | Boot Size | Boot Color | Performance Type |
|-----------------|----------------------------------|--------------|---------------------------|
| 0800 = 80 um | 14 = 0.9 mm (14.5 mm Short Step) | BLK = Black | Blank = Standard |
| 1250 = 125 um | 29 = 0.9 mm (29 mm Long Step) | BLU = Blue | P = Premium |
| 1255 = 125.5 um | 2 = 2 mm | GRN = Green | E = Spectacular® |
| 1260 = 126 um | 3 = 3 mm | RED = Red | E-E = Double Spectacular® |
| 1270 = 127 um | | WHT = White | |
| 1280 = 128 um | | BGE = Beige | |
| | | GRY = Gray | |
| | | YLW = Yellow | |

Rev. 01 Initial Release: RP

Rev. 02: Double Spectacular® integration into performance type and ordering information: RP



Quality Policy

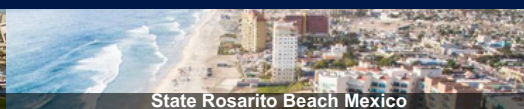
Meet or exceed customer expectation in product quality and on time delivery.

FC Connector - PM (Polarization Maintaining), Dome / page. 5-5

OUR LOCATIONS



San Diego USA



State Rosarito Beach Mexico



Dongguan China



customerservice@pfpfiber.com



408-946-4040



www.precisionfiberproducts.com