

# PFP ST 2.5MM OD MULTIMODE STAINLESS FERRULES



Part Number: MM-FER2006-304-XXXX

## PRODUCT DESCRIPTION

Precision Fiber Products, Inc., manufactures ST type 2.5mm OD stainless ferrule sticks. They come in a variety of ID bore sizes and performance types.

## FEATURES

- 100% tested for concentricity and bore size.
- Custom manufacturing available.
- Low insertion loss.
- Low back reflection.
- High precision and reliability.

## MECHANICAL SPECIFICATIONS

### MULTIMODE

|                |               |
|----------------|---------------|
| Family         | Ferrule       |
| Length         | 12.7 ± 0.05mm |
| Outer Diameter | 2.5mm         |
| Bore Size      | 126 - 850um   |
| End Face       | Flat          |
| Material       | Stainless 304 |

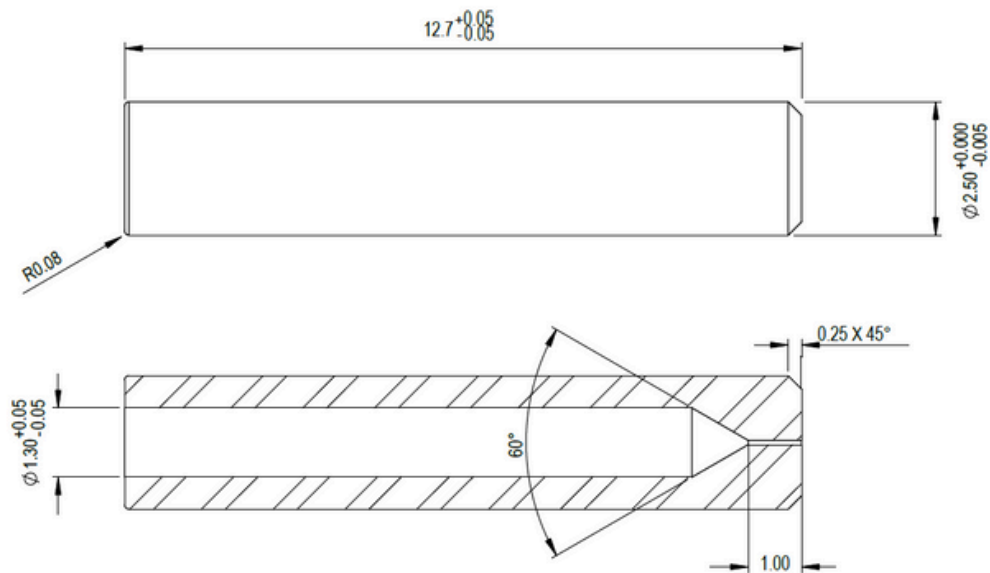


## COEFFICIENT OF LINEAR THERMAL EXPANSION

| Temperature range |        | Coefficient             |                         |
|-------------------|--------|-------------------------|-------------------------|
| °F                | °C     | in/in/°F                | cm/cm/°C                |
| 68-212            | 20-100 | 9.2 x 10 <sup>-6</sup>  | 16.6 x 10 <sup>-6</sup> |
| 18-1600           | 20-870 | 11.0 x 10 <sup>-6</sup> | 19.8 x 10 <sup>-6</sup> |

## DRAWING

(All dimensions are in mm and are for reference only)



## CONCENTRICITY TABLE

### PERFORMANCE TABLE

| -XXXX | I.D    | Standard |        |               | Premium |        |               | Spectacular® |        |               |
|-------|--------|----------|--------|---------------|---------|--------|---------------|--------------|--------|---------------|
|       |        | Min      | Max    | Concentricity | Min     | Max    | Concentricity | Min          | Max    | Concentricity |
| 1260  | 0.1260 | 0.1260   | 0.1300 | <4            | 0.1260  | 0.1300 | <2            | 0.1260       | 0.1280 | <2            |
| 1400  | 0.1400 | 0.1400   | 0.1450 | <10           | 0.1400  | 0.1450 | <5            | 0.1400       | 0.1425 | <5            |
| 1500  | 0.1500 | 0.1500   | 0.1550 | <10           | 0.1500  | 0.1550 | <5            | 0.1500       | 0.1525 | <5            |
| 1600  | 0.1600 | 0.1600   | 0.1650 | <15           | 0.1600  | 0.1650 | <7.5          | 0.1600       | 0.1625 | <7.5          |
| 1700  | 0.1700 | 0.1700   | 0.1750 | <15           | 0.1700  | 0.1750 | <7.5          | 0.1700       | 0.1725 | <7.5          |
| 1800  | 0.1800 | 0.1800   | 0.1900 | <15           | 0.1800  | 0.1900 | <7.5          | 0.1800       | 0.1850 | <7.5          |



## PERFORMANCE TABLE

| -XXXX | I.D    | Standard |        |               | Premium |        |               | Spectacular® |        |               |
|-------|--------|----------|--------|---------------|---------|--------|---------------|--------------|--------|---------------|
|       |        | Min      | Max    | Concentricity | Min     | Max    | Concentricity | Min          | Max    | Concentricity |
| 1900  | 0.1900 | 0.1900   | 0.1950 | <15           | 0.1900  | 0.1950 | <7.5          | 0.1900       | 0.1925 | <7.5          |
| 2000  | 0.2000 | 0.2000   | 0.2100 | <20           | 0.2000  | 0.2100 | <10           | 0.2000       | 0.2050 | <10           |
| 2100  | 0.2100 | 0.2100   | 0.2200 | <20           | 0.2100  | 0.2200 | <10           | 0.2100       | 0.2150 | <10           |
| 2200  | 0.2200 | 0.2200   | 0.2300 | <20           | 0.2200  | 0.2300 | <10           | 0.2200       | 0.2250 | <10           |
| 2300  | 0.2300 | 0.2300   | 0.2400 | <20           | 0.2300  | 0.2400 | <10           | 0.2300       | 0.2350 | <10           |
| 2400  | 0.2400 | 0.2400   | 0.2500 | <20           | 0.2400  | 0.2500 | <10           | 0.2400       | 0.2450 | <10           |
| 2500  | 0.2500 | 0.2500   | 0.2600 | <20           | 0.2500  | 0.2600 | <10           | 0.2500       | 0.2550 | <10           |
| 2600  | 0.2600 | 0.2600   | 0.2700 | <20           | 0.2600  | 0.2700 | <10           | 0.2600       | 0.2650 | <10           |
| 2700  | 0.2700 | 0.2700   | 0.2800 | <20           | 0.2700  | 0.2800 | <10           | 0.2700       | 0.2750 | <10           |
| 2800  | 0.2800 | 0.2800   | 0.2900 | <20           | 0.2800  | 0.2900 | <10           | 0.2800       | 0.2850 | <10           |
| 2900  | 0.2900 | 0.2900   | 0.3000 | <20           | 0.2900  | 0.3000 | <10           | 0.2900       | 0.2950 | <10           |
| 3000  | 0.3000 | 0.3000   | 0.3100 | <20           | 0.3000  | 0.3100 | <10           | 0.3000       | 0.3050 | <10           |
| 3100  | 0.3100 | 0.3100   | 0.3200 | <20           | 0.3100  | 0.3200 | <10           | 0.3100       | 0.3150 | <10           |
| 3200  | 0.3200 | 0.3200   | 0.3300 | <20           | 0.3200  | 0.3300 | <10           | 0.3200       | 0.3250 | <10           |
| 3300  | 0.3300 | 0.3300   | 0.3400 | <20           | 0.3300  | 0.3400 | <10           | 0.3300       | 0.3350 | <10           |
| 3400  | 0.3400 | 0.3400   | 0.3500 | <20           | 0.3400  | 0.3500 | <10           | 0.3400       | 0.3450 | <10           |
| 3500  | 0.3500 | 0.3500   | 0.3600 | <20           | 0.3500  | 0.3600 | <10           | 0.3500       | 0.3550 | <10           |
| 3600  | 0.3600 | 0.3600   | 0.3700 | <20           | 0.3600  | 0.3700 | <10           | 0.3600       | 0.3650 | <10           |
| 3700  | 0.3700 | 0.3700   | 0.3800 | <20           | 0.3700  | 0.3800 | <10           | 0.3700       | 0.3750 | <10           |
| 3800  | 0.3800 | 0.3800   | 0.3900 | <20           | 0.3800  | 0.3900 | <10           | 0.3800       | 0.3850 | <10           |
| 3900  | 0.3900 | 0.3900   | 0.4000 | <20           | 0.3900  | 0.4000 | <10           | 0.3900       | 0.3950 | <10           |
| 4000  | 0.4000 | 0.4000   | 0.4100 | <20           | 0.4000  | 0.4100 | <10           | 0.4000       | 0.4050 | <10           |
| 4100  | 0.4100 | 0.4100   | 0.4200 | <20           | 0.4100  | 0.4200 | <10           | 0.4100       | 0.4150 | <10           |
| 4200  | 0.4200 | 0.4200   | 0.4300 | <20           | 0.4200  | 0.4300 | <10           | 0.4200       | 0.4250 | <10           |
| 4300  | 0.4300 | 0.4300   | 0.4400 | <20           | 0.4300  | 0.4400 | <10           | 0.4300       | 0.4350 | <10           |
| 4400  | 0.4400 | 0.4400   | 0.4500 | <20           | 0.4400  | 0.4500 | <10           | 0.4400       | 0.4450 | <10           |
| 4500  | 0.4500 | 0.4500   | 0.4600 | <30           | 0.4500  | 0.4600 | <15           | 0.4500       | 0.4550 | <15           |
| 4600  | 0.4600 | 0.4600   | 0.4700 | <30           | 0.4600  | 0.4700 | <15           | 0.4600       | 0.4650 | <15           |
| 4700  | 0.4700 | 0.4700   | 0.4800 | <30           | 0.4700  | 0.4800 | <15           | 0.4700       | 0.4750 | <15           |

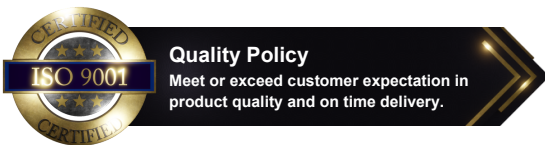


**PERFORMANCE TABLE**

| -XXXX | I.D    | Standard |        |               | Premium |        |               | Spectacular® |        |               |
|-------|--------|----------|--------|---------------|---------|--------|---------------|--------------|--------|---------------|
|       |        | Min      | Max    | Concentricity | Min     | Max    | Concentricity | Min          | Max    | Concentricity |
| 4800  | 0.4800 | 0.4800   | 0.4900 | <30           | 0.4800  | 0.4900 | <15           | 0.4800       | 0.4850 | <15           |
| 4900  | 0.4900 | 0.4900   | 0.5000 | <30           | 0.4900  | 0.5000 | <15           | 0.4900       | 0.4950 | <15           |
| 5000  | 0.5000 | 0.5000   | 0.5100 | <30           | 0.5000  | 0.5100 | <15           | 0.5000       | 0.5050 | <15           |
| 5100  | 0.5100 | 0.5100   | 0.5200 | <40           | 0.5100  | 0.5200 | <20           | 0.5100       | 0.5150 | <20           |
| 5200  | 0.5200 | 0.5200   | 0.5300 | <40           | 0.5200  | 0.5300 | <20           | 0.5200       | 0.5250 | <20           |
| 5300  | 0.5300 | 0.5300   | 0.5400 | <40           | 0.5300  | 0.5400 | <20           | 0.5300       | 0.5350 | <20           |
| 5400  | 0.5400 | 0.5400   | 0.5500 | <40           | 0.5400  | 0.5500 | <20           | 0.5400       | 0.5450 | <20           |
| 5500  | 0.5500 | 0.5500   | 0.5600 | <40           | 0.5500  | 0.5600 | <20           | 0.5500       | 0.5550 | <20           |
| 5600  | 0.5600 | 0.5600   | 0.5700 | <40           | 0.5600  | 0.5700 | <20           | 0.5600       | 0.5650 | <20           |
| 5700  | 0.5700 | 0.5700   | 0.5800 | <40           | 0.5700  | 0.5800 | <20           | 0.5700       | 0.5750 | <20           |
| 5800  | 0.5800 | 0.5800   | 0.5900 | <40           | 0.5800  | 0.5900 | <20           | 0.5800       | 0.5850 | <20           |
| 5900  | 0.5900 | 0.5900   | 0.6000 | <40           | 0.5900  | 0.6000 | <20           | 0.5900       | 0.5950 | <20           |
| 6000  | 0.6000 | 0.6000   | 0.6100 | <40           | 0.6000  | 0.6100 | <20           | 0.6000       | 0.6050 | <20           |
| 6100  | 0.6100 | 0.6100   | 0.6200 | <40           | 0.6100  | 0.6200 | <20           | 0.6100       | 0.6150 | <20           |
| 6200  | 0.6200 | 0.6200   | 0.6300 | <40           | 0.6200  | 0.6300 | <20           | 0.6200       | 0.6250 | <20           |
| 6300  | 0.6300 | 0.6300   | 0.6400 | <40           | 0.6300  | 0.6400 | <20           | 0.6300       | 0.6350 | <20           |
| 6400  | 0.6400 | 0.6400   | 0.6500 | <40           | 0.6400  | 0.6500 | <20           | 0.6400       | 0.6450 | <20           |
| 6500  | 0.6500 | 0.6500   | 0.6600 | <40           | 0.6500  | 0.6600 | <20           | 0.6500       | 0.6550 | <20           |
| 6600  | 0.6600 | 0.6600   | 0.6700 | <40           | 0.6600  | 0.6700 | <20           | 0.6600       | 0.6650 | <20           |
| 6700  | 0.6700 | 0.6700   | 0.6800 | <40           | 0.6700  | 0.6800 | <20           | 0.6700       | 0.6750 | <20           |
| 6800  | 0.6800 | 0.6800   | 0.6900 | <40           | 0.6800  | 0.6900 | <20           | 0.6800       | 0.6850 | <20           |



| -XXXX | I.D    | Standard |        |               | Premium |        |               | Spectacular® |        |               |
|-------|--------|----------|--------|---------------|---------|--------|---------------|--------------|--------|---------------|
|       |        | Min      | Max    | Concentricity | Min     | Max    | Concentricity | Min          | Max    | Concentricity |
| 6900  | 0.6900 | 0.6900   | 0.7000 | <40           | 0.6900  | 0.7000 | <20           | 0.6900       | 0.6950 | <20           |
| 7000  | 0.7000 | 0.7000   | 0.7100 | <40           | 0.7000  | 0.7100 | <20           | 0.7000       | 0.7050 | <20           |
| 7100  | 0.7100 | 0.7100   | 0.7200 | <40           | 0.7100  | 0.7200 | <20           | 0.7100       | 0.7150 | <20           |
| 7200  | 0.7200 | 0.7200   | 0.7300 | <40           | 0.7200  | 0.7300 | <20           | 0.7200       | 0.7250 | <20           |
| 7300  | 0.7300 | 0.7300   | 0.7400 | <40           | 0.7300  | 0.7400 | <20           | 0.7300       | 0.7350 | <20           |
| 7400  | 0.7400 | 0.7400   | 0.7500 | <40           | 0.7400  | 0.7500 | <20           | 0.7400       | 0.7450 | <20           |
| 7500  | 0.7500 | 0.7500   | 0.7600 | <40           | 0.7500  | 0.7600 | <20           | 0.7500       | 0.7550 | <20           |
| 7600  | 0.7600 | 0.7600   | 0.7700 | <50           | 0.7600  | 0.7700 | <25           | 0.7600       | 0.7650 | <25           |
| 7700  | 0.7700 | 0.7700   | 0.7800 | <50           | 0.7700  | 0.7800 | <25           | 0.7700       | 0.7750 | <25           |
| 7800  | 0.7800 | 0.7800   | 0.7900 | <50           | 0.7800  | 0.7900 | <25           | 0.7800       | 0.7850 | <25           |
| 7900  | 0.7900 | 0.7900   | 0.8000 | <50           | 0.7900  | 0.8000 | <25           | 0.7900       | 0.7950 | <25           |
| 8000  | 0.8000 | 0.8000   | 0.8100 | <50           | 0.8000  | 0.8100 | <25           | 0.8000       | 0.8050 | <25           |
| 8100  | 0.8100 | 0.8100   | 0.8200 | <50           | 0.8100  | 0.8200 | <25           | 0.8100       | 0.8150 | <25           |
| 8200  | 0.8200 | 0.8200   | 0.8300 | <50           | 0.8200  | 0.8300 | <25           | 0.8200       | 0.8250 | <25           |
| 8300  | 0.8300 | 0.8300   | 0.8400 | <50           | 0.8300  | 0.8400 | <25           | 0.8300       | 0.8350 | <25           |
| 8400  | 0.8400 | 0.8400   | 0.8500 | <50           | 0.8400  | 0.8500 | <25           | 0.8400       | 0.8450 | <25           |
| 8500  | 0.8500 | 0.8500   | 0.8600 | <50           | 0.8500  | 0.8600 | <25           | 0.8500       | 0.8550 | <25           |



Rev. 01 Initial Release: RP  
Rev. 02 CTE Specs added: RP

**OUR LOCATIONS**

