

FC STAINLESS ALLOY FERRULE CONNECTOR



Part Number: MM-CON2004-SS-XXXX

PRODUCT DESCRIPTION

Precision Fiber Products Inc., manufactures FC multimode connectors. They come in a variety of ID bore sizes and performance types.

FEATURES

- Pre-assembled
- Accommodates 0.9mm, 2mm and 3mm fiber types
- Available with 0.9mm, 2mm and 3mm boots
- Complies with IEC, TIA and telcordia standards
- Suitable for high-speed production polishing processes
- Conforms to JIS C5973 standard (F04 type connector)

MECHANICAL SPECIFICATIONS

MULTIMODE

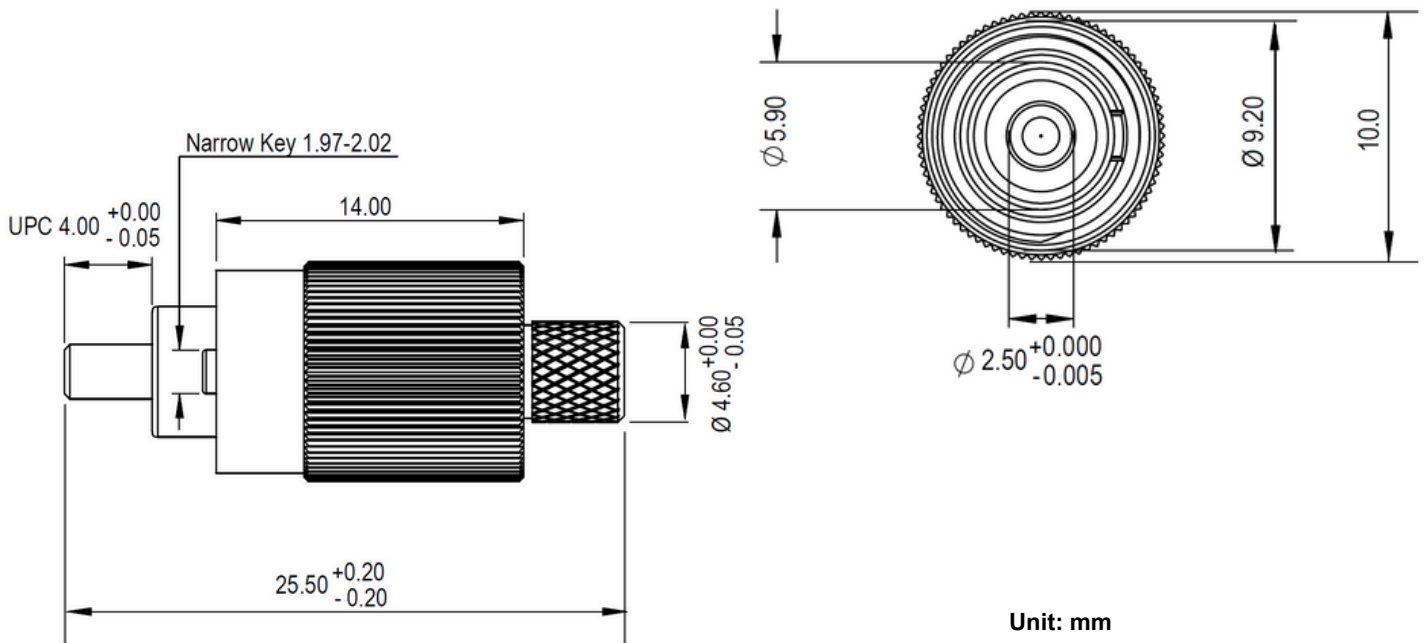
Family	Connector
Type	FC
End Face	Flat
Operating Temperature	-25° - + 70 °C



Part	Material	Size
Ferrule	Stainless Steel Alloy	-
Body	Nickel Plated Brass	-
Boot	PVC	0.9mm, 2mm, 3mm
Crimp	Aluminum	2mm, 3mm

BOOT COLOR	XXX
BLACK	BLK
BLUE	BLU
GREEN	GRN
RED	RED
WHITE	WHT
BEIGE	BGE
GRAY	GRY
YELLOW	YLW

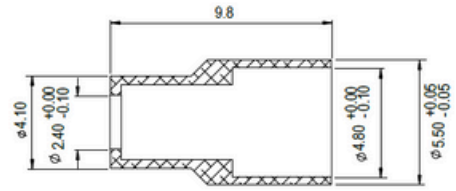
DRAWING SPECIFICATIONS



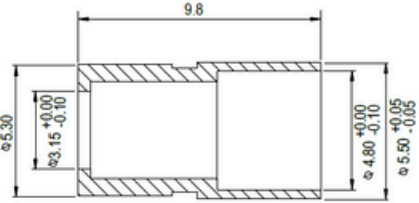


PN: CRP-2SC
Crimp Hex Size: (0.197, 0.131)

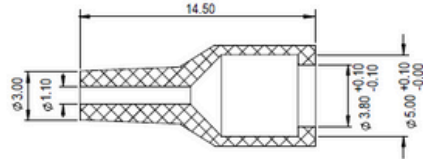
- 0.00



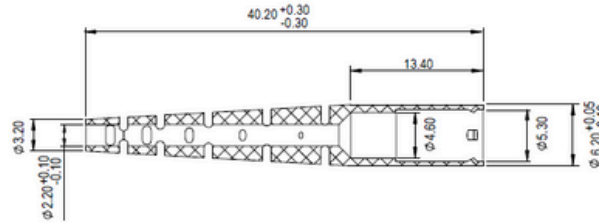
PN: CRP-3SC
Crimp Hex Size: (0.197, 0.171)



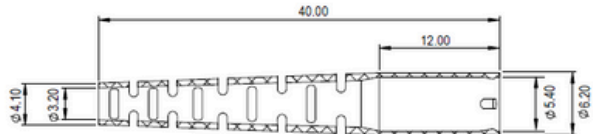
PN: BOT-SC-9FC-S-XXX



PN: BOT-SCFCST-2SC00-XXX



PN: BOT-SCFCST-3SC00-XXX



Unit: mm

*For perfect and easy crimping, use the [PFP Fiber Optic Crimp Tool \(PFP-CT1000\)](#)



ORDERING INFORMATION

MM-CON2004-SS-XXXX

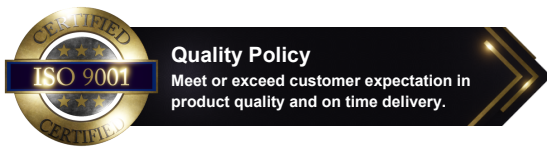
-XX

-XXX

-X

ID Bore	Boot Size	Boot Color	Performance Type
1260 = 126um	14 = 0.9mm (14.5mm short step)	BLK = Black	Blank = Standard
3000 = 300um	29 = 0.9mm (29mm long step)	BLU = Blue	P = Premium
5300 = 530um	02 = 2mm	GRN = Green	E = Spectacular®
7500 = 750um	03 = 3mm	RED = Red	
8500 = 850um		WHT = White	
		BGE = Beige	
		YLW = Yellow	

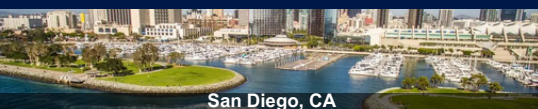
* [Contact us](#) to request more ID Bore sizes.



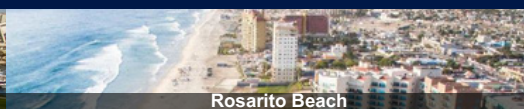
Rev. 01 Initial Release: RP
Rev. 02 Updated Crimp Hex Size: RP

FC Stainless Alloy Ferrule Connector / page. 4-4

OUR LOCATIONS



San Diego, CA



Rosarito Beach



Dongguan China

customerservice@pfpfiber.com

408-946-4040

www.precisionfiberproducts.com