

FC/APC CONNECTOR - PM (POLARIZATION MAINTAINING), STEP



Part Number: PM-CON1007S-XXXX-XX-XXX-XX

PRODUCT DESCRIPTION

Precision Fiber Products manufactures FC/APC singlemode connectors. They come in a variety of ID bore sizes and performance types.

Suggested crimp tool for assembly:

PFP Fiber Optic Crimp Tool

Part Number: **PFP-CT1000**

Available in Standard, Premium and Spectacular®

FEATURES

- Pre-assembled.
- Pre-radiused, pre-polished ferrule.
- Accommodates 0.9mm, 2mm and 3mm fiber types.
- Available with 0.9mm, 2mm and 3mm boots.
- Complies with IEC, TIA and telcordia standards.
- Suitable for high-speed production polishing processes.
- Conforms to JIS C5973 standard (F04 type Connector).



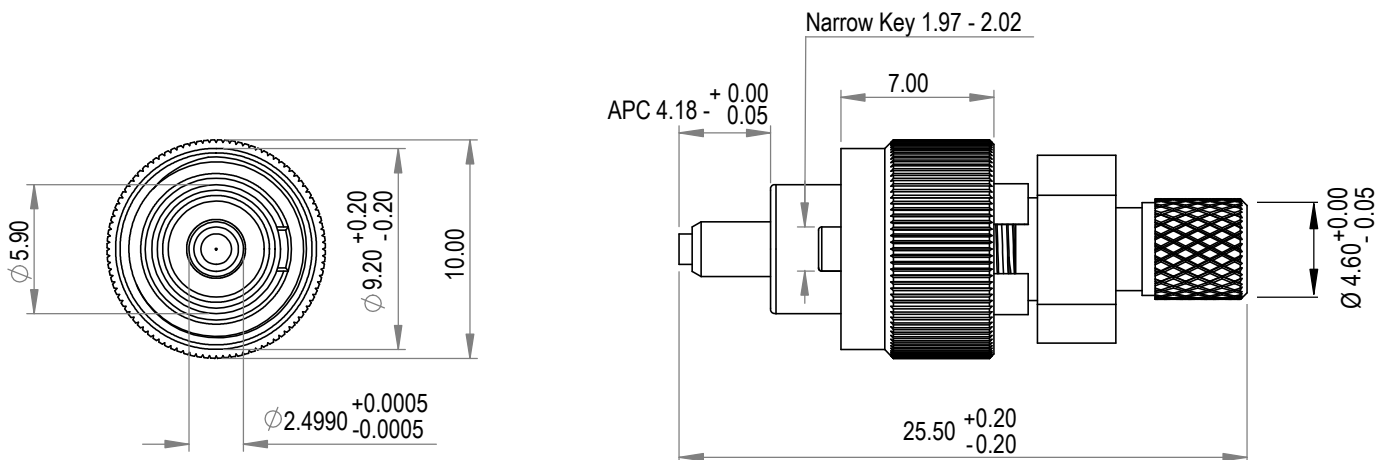
SPECIFICATIONS

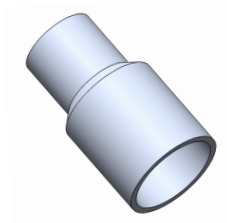
Family	Connector
Type	FC
End Face	Step
Operating Temperature	-25° - + 70° C

BOOT COLOR	XXX
Black	BLK
Blue	BLU
Green	GRN
Red	RED
White	WHT
Beige	BGE
Gray	GRY
Yellow	YLW

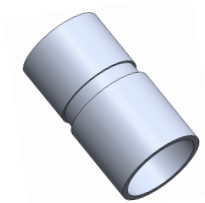
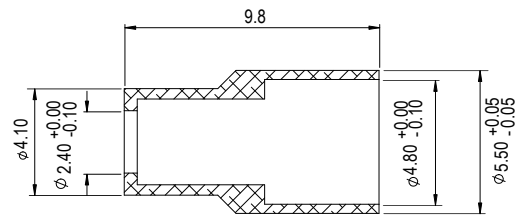
Part	Material	Size
Ferrule	Ceramic Zirconia ZrO ₂	-
Body	Nickel Plate Brass	-
Boot	PVC	0.9mm, 2mm, 3mm
Crimp	Aluminum	2mm, 3mm

DRAWING SPECIFICATIONS

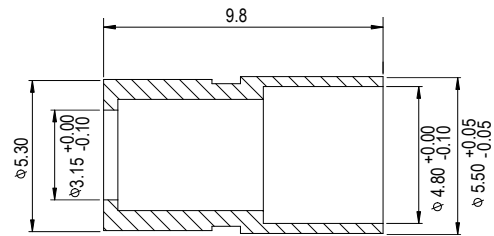




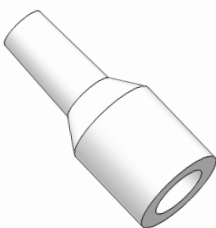
PN: CRP-2SC
Crimp Hex Size: (0.197, 0.131)



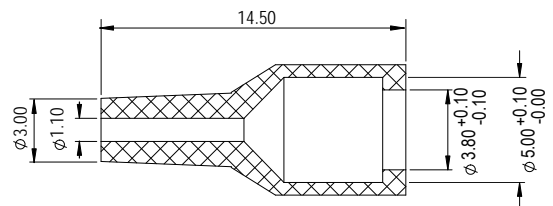
PN: CRP-3SC
Crimp Hex Size: (0.197, 0.171)

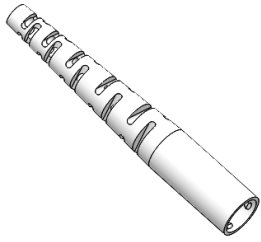


PFP Fiber Optic Crimp Tool
PN: **PFP-CT1000**

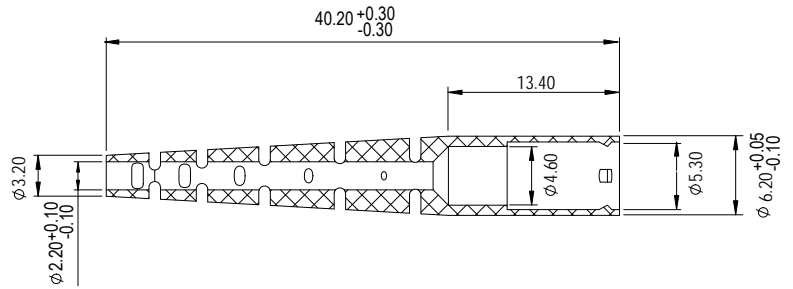


PN: BOT-SC-9FC-S-XXX

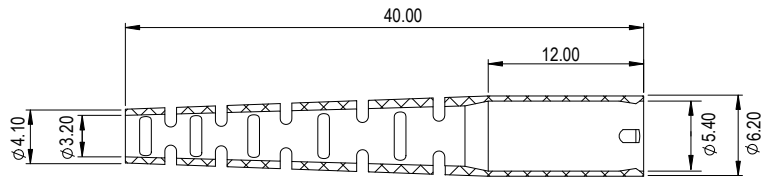




PN: BOT-SCFCST-2SC00-XXX



PN: BOT-SCFCST-3SC00-XXX



-XXXX	I.D	Standard			Premium			Spectacular®			Double Spectacular®		
		Min	Max	Concentricity	Min	Max	Concentricity	Min	Max	Concentricity	Min	Max	Concentricity
1250	0.1250	0.1250	0.1260	<1	0.1250	0.1260	<0.5	0.1250	0.1255	<0.5	0.1250	0.1255	<0.25um
1255	0.1255	0.1255	0.1265	<1	0.1255	0.1265	<0.5	0.1255	0.1260	<0.5	0.1255	0.1260	<0.25um
1260	0.1260	0.1260	0.1270	<1	0.1260	0.1270	<0.5	0.1260	0.1265	<0.5	0.1260	0.1265	<0.25um
1270	0.1270	0.1270	0.1280	<1	0.1270	0.1280	<0.5	0.1270	0.1275	<0.5	0.1270	0.1275	<0.25um



ORDERING INFORMATION

PM-CON1007S-XXXX

XX

XXX

XX

Ferrule ID Bore	Boot Size	Boot Color	Performance Type
1250 = 125 um	14 = 0.9 mm (14.5 mm Short Step)	BLK = Black	Blank = Standard
1255 = 125.5 um	29 = 0.9 mm (29 mm Long Step)	BLU = Blue	P = Premium
1260 = 126 um	2 = 2 mm	GRN = Green	E = Spectacular®
1270 = 127 um	3 = 3 mm	RED = Red	E-E = Double Spectacular®
		WHT = White	
		BGE = Beige	
		GRY = Gray	
		YLW = Yellow	

Rev. 01 Initial Release: RP

Rev. 02: Double Spectacular® integration into performance type and ordering information: RP



Quality Policy

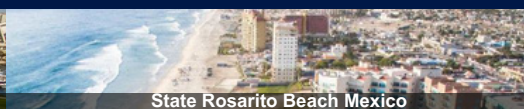
Meet or exceed customer expectation in product quality and on time delivery.

FC/APC Connector - PM (Polarization Maintaining), Step / page. 5-5

OUR LOCATIONS



San Diego USA



State Rosarito Beach Mexico



Dongguan China



customerservice@pfpfiber.com



408-946-4040



www.precisionfiberproducts.com