

SMA 905 CERAMIC FERRULE CONNECTOR MM STAINLESS



Part Number: MM-CON905CZ-SS-XXXX

PRODUCT DESCRIPTION

Precision Fiber Products Inc., manufactures SMA multimode connectors. They come in a variety of ID bore sizes and performance types.

FEATURES

- Threaded coupling nut
- TIA/IEC compliant
- Ceramic zirconia (ZrO₂) ferrule
- Available with 0.9mm, 2.0mm and 3.0mm Boots

APPLICATIONS

- Industrial
- Medical/Surgical
- Laser Systems
- Spectrometers

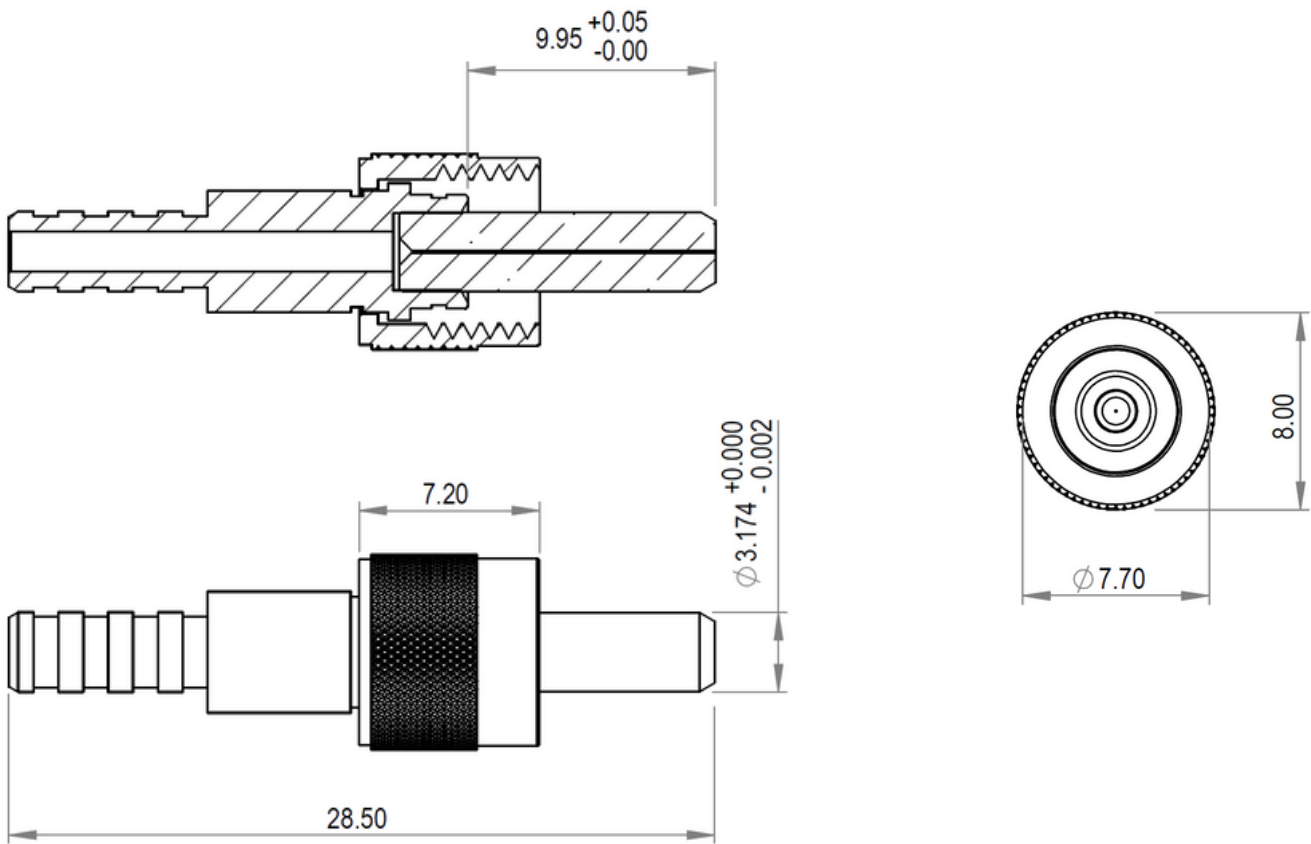
MULTIMODE MECHANICAL SPECIFICATIONS

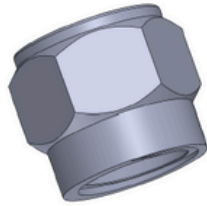
Family	Connector
Type	SMA
End Face	10-25mm Spherical Radius
Operating Temperature	-40° - + 85 °C



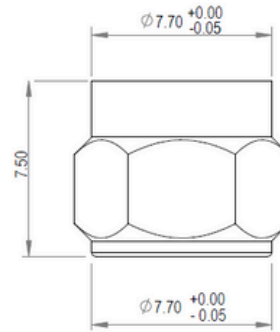
Part	Material	Size
Ferrule	Ceramic Zirconia (ZrO2)	-
Body	Stainless Steel 303	-
Hex Nut	Stainless Steel 303	-
Round Nut	Nickel Plated Brass	-
Boot	TPEE PVC	0.9mm 2mm, 3mm
Crimp	Aluminum 5053	2mm, 3mm

DRAWING SPECIFICATIONS

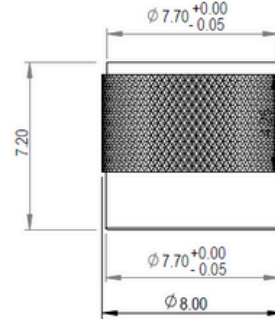




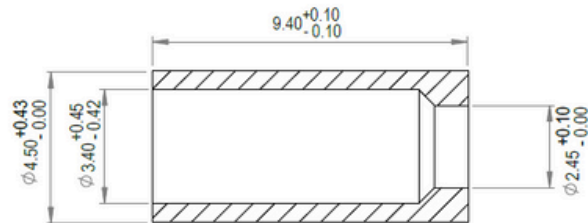
PN: Hex Nut



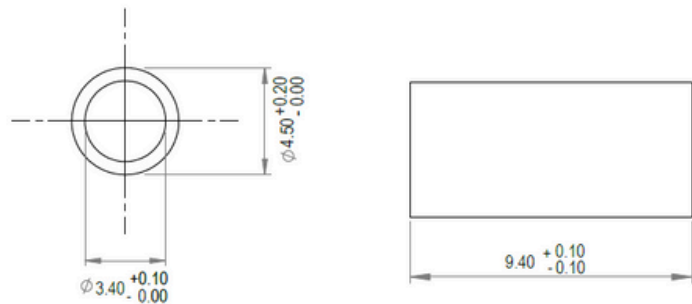
PN: Round Nut



PN: CRP-2ST-STA
Crimp Hex Size: (0.147, 0.131)

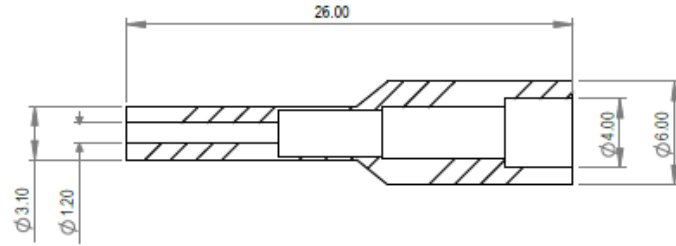


PN: CRP-3ST-STA
Crimp Hex Size: (0.147, 0.131)

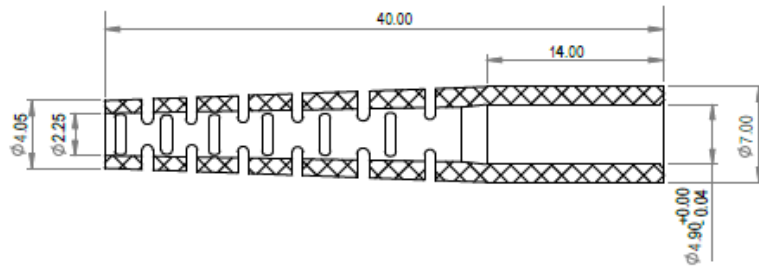


Unit: mm

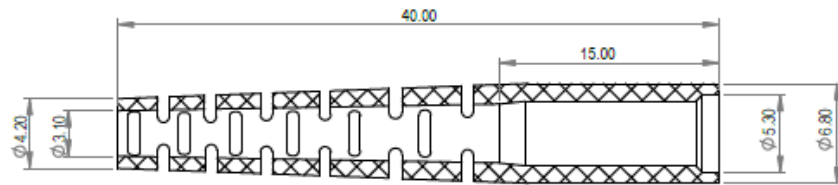
***For perfect and easy crimping, use the [PFP Fiber Optic Crimp Tool \(PFP-CT1000\)](#)**



PN: BOT-905-9BLK



PN: BOT-SMA-2BLK



PN: BOT-905-3BLK



ORDERING INFORMATION

MM-CON905CZ-SS-XXXX

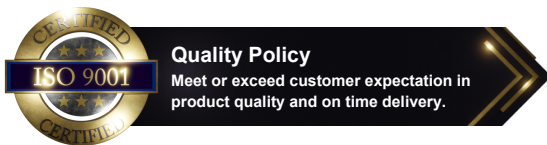
-XX

-XXX

-X

ID Bore	Boot Size	Boot Color	Performance Type
1260 = 126um	14 = 0.9mm (14.5mm short step)	BLK = Black	Blank = Standard
3000 = 300um	29 = 0.9mm (29mm long step)	BLU = Blue	P = Premium
5300 = 530um	02 = 2mm	GRN = Green	E = Spectacular®
6400 = 640um	03 = 3mm	RED = Red	
		WHT = White	
		BGE = Beige	
		YLW = Yellow	

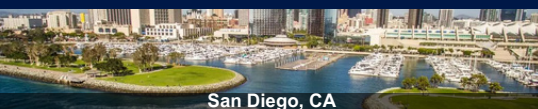
* [Contact us](#) to request more ID Bore sizes.



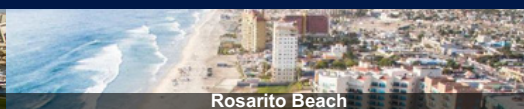
Rev. 01 Initial Release: RP
Rev. 02 Spherical Radius Added: RP

SMA 905 Ceramic Ferrule Connector MM Stainless / page. 5-5

OUR LOCATIONS



San Diego, CA



Rosarito Beach



Dongguan China

customerservice@pfpfiber.com

408-946-4040

www.precisionfiberproducts.com