

## FC/APC CONNECTOR- PM (POLARIZATION MAINTAINING), CONE



Part Number: PM-CON1007C-XXXX-XX-XXX-XX

### PRODUCT DESCRIPTION

Precision Fiber Products produces FC/APC multimode connectors, available in a diverse range of ID bore sizes and performance classifications.

**Suggested crimp tool for assembly:**

PFP Fiber Optic Crimp Tool

Part Number: **PFP-CT1000**

**Available in Standard, Premium and Spectacular®**

### FEATURES

- Pre-assembled.
- Pre-radiused, pre-polished ferrule.
- Accommodates 0.9mm, 2mm and 3mm fiber types.
- Available with 0.9mm, 2mm and 3mm boots.
- Complies with IEC, TIA and telcordia standards.
- Suitable for high-speed production polishing processes.
- Conforms to JIS C5973 standard (F04 type Connector).



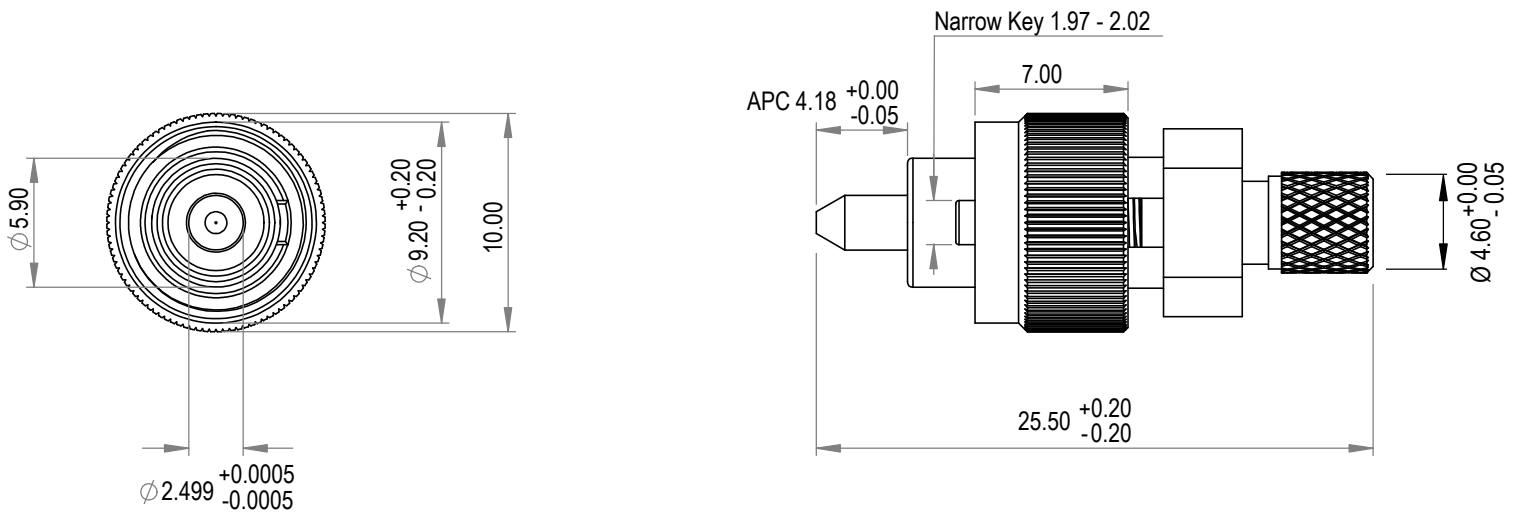
## SPECIFICATIONS

<b>Family</b>	Connector
<b>Type</b>	FC
<b>End Face</b>	Cone
<b>Operating Temperature</b>	-25° - + 70° C

<b>BOOT COLOR</b>	<b>XXX</b>
<b>Black</b>	BLK
<b>Blue</b>	BLU
<b>Green</b>	GRN
<b>Red</b>	RED
<b>White</b>	WHT
<b>Beige</b>	BGE
<b>Gray</b>	GRY
<b>Yellow</b>	YLW

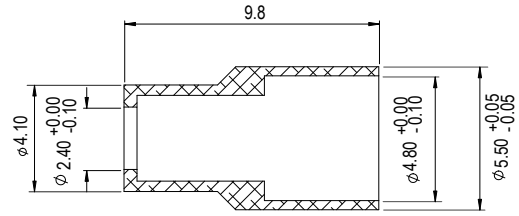
<b>Part</b>	<b>Material</b>	<b>Size</b>
<b>Ferrule</b>	Ceramic Zirconia ZrO <sub>2</sub>	-
<b>Body</b>	Nickel Plate Brass	-
<b>Boot</b>	PVC	0.9mm, 2mm, 3mm
<b>Crimp</b>	Aluminum	2mm, 3mm

## DRAWING SPECIFICATIONS

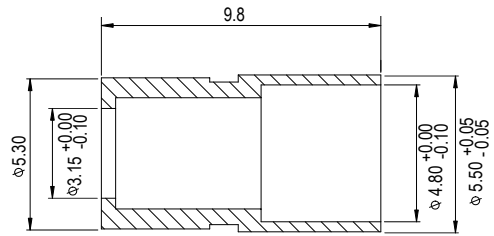




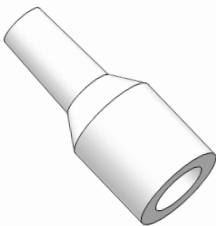
**PN:** CRP-2SC  
**Crimp Hex Size:** (0.197, 0.131)



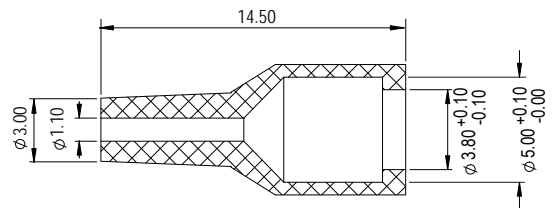
**PN:** CRP-3SC  
**Crimp Hex Size:** (0.197, 0.171)

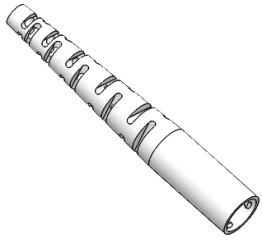


**PFP Fiber Optic Crimp Tool**  
**PN:** PFP-CT1000

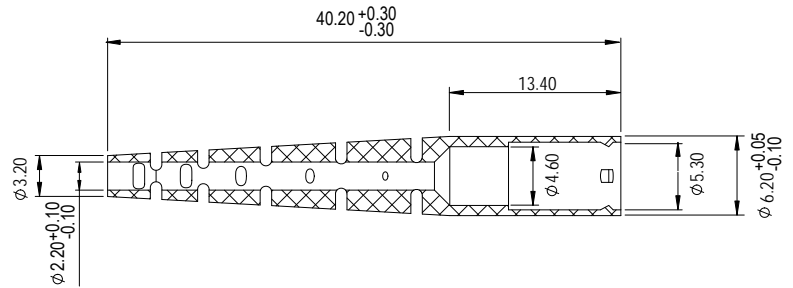


**PN:** BOT-SC-9FC-S-XXX

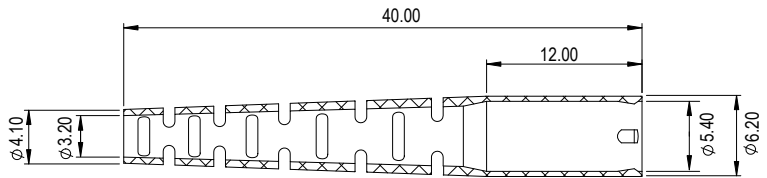




PN: BOT-SCFCST-2SC00-XXX



PN: BOT-SCFCST-3SC00-XXX



-XXXX	I.D	Standard			Premium			Spectacular®			Double Spectacular®		
		Min	Max	Concentricity	Min	Max	Concentricity	Min	Max	Concentricity	Min	Max	Concentricity
1250	0.1250	0.1250	0.1260	<1	0.1250	0.1260	<0.5	0.1250	0.1255	<0.5	0.1250	0.1255	<0.25um
1255	0.1255	0.1255	0.1265	<1	0.1255	0.1265	<0.5	0.1255	0.1260	<0.5	0.1255	0.1260	<0.25um
1260	0.1260	0.1260	0.1270	<1	0.1260	0.1270	<0.5	0.1260	0.1265	<0.5	0.1260	0.1265	<0.25um
1270	0.1270	0.1270	0.1280	<1	0.1270	0.1280	<0.5	0.1270	0.1275	<0.5	0.1270	0.1275	<0.25um



# ORDERING INFORMATION

PM-CON1007C-XXXX

XX

XXX

XX

Ferrule ID Bore	Boot Size	Boot Color	Performance Type
1250 = 125 um	14 = 0.9 mm (14.5 mm Short Step)	BLK = Black	Blank = Standard
1255 = 125.5 um	29 = 0.9 mm (29 mm Long Step)	BLU = Blue	P = Premium
1260 = 126 um	2 = 2 mm	GRN = Green	E = Spectacular®
1270 = 127 um	3 = 3 mm	RED = Red	E-E = Double Spectacular®
		WHT = White	
		BGE = Beige	
		GRY = Gray	
		YLW = Yellow	

Rev. 01 Initial Release: RP

Rev. 02: Double Spectacular® integration into performance type and ordering information: RP



### Quality Policy

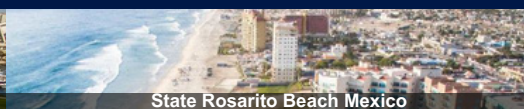
Meet or exceed customer expectation in product quality and on time delivery.

FC/APC Connector - PM (Polarization Maintaining), Step / page. 5-5

## OUR LOCATIONS



San Diego USA



State Rosarito Beach Mexico



Dongguan China



customerservice@pfpfiber.com



408-946-4040



www.precisionfiberproducts.com